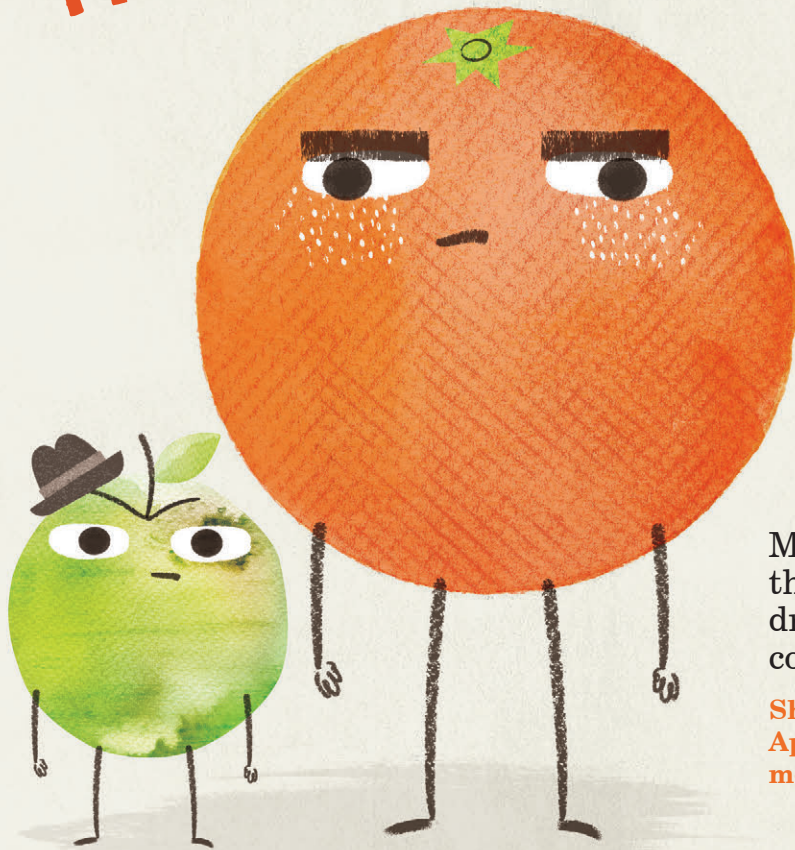




IT'S RHYME TIME!



Match the words that rhyme and draw a line to connect them.

Share your favourite Bad Apple rhymes on social media... #BadAppleBook

PEAR
PEA
CAT
SPUD
SPOON
EGG
PLUM
ORANGE
ROSE
PIE
SNAKE

MUD
NOSE
LEG
TEA
CAKE
HAT
TUNE
MUM
CHAIR
EYE



HE'S ROTTEN TO THE CORE AND NOW YOU CAN READ ALL ABOUT IT...



HUW LEWIS JONES & BEN SANDERS